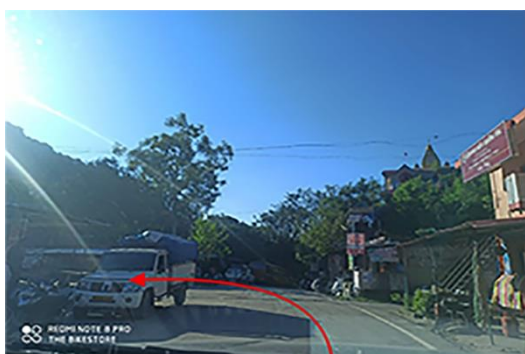


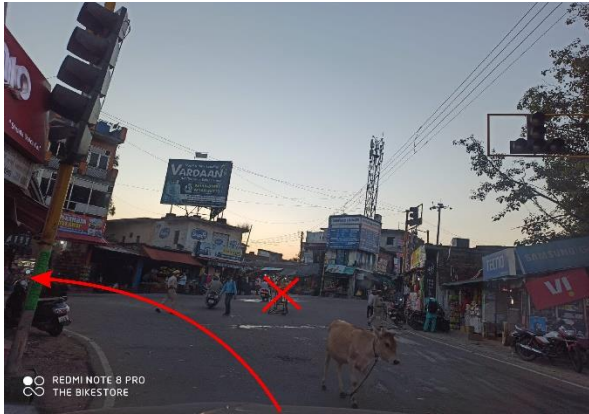
ROUTE SHEET OF SHIVALIK SIGNATURE			
DISTANCE (KM)	DIRECTION	LOCATION/LANDMARK	TOTAL DISTANCE (KM)
0.0	*	START HOTEL SEA ROCK	0.0
9.1	Sharp LEFT	Take sharp LEFT turn at village Behdu, (uphill ahead)	9.1



2.5	Straight	Downhill begins	11.6
11.8	Straight	Railway Crossing	23.4
0.6	Right	Take Sharp Right turn at Radhasoami Satsang Bhawan (towards Mubarikpur)	24
0.4	Straight	Go Straight	24.4
0.7	Straight	Go Straight at Rotory Chowk	25.1
0.3	Straight	Go Straight (Old Bus Stand Chowk)	25.4
3.6	Straight	Go Straight	29
14	Left	Turn Left at Baruhi	43



13.6	Straight	Go straight at Amb	56.6
4.2	Left	Turn Left at Mubarikpur	60.8



8.4	Checkpoint	Coffee House on R.H.S.	69.2
-----	------------	------------------------	------

27.6	Right	Sharp Right towards Dasuya	88.4
------	-------	----------------------------	------





0.8	Straight	Bad Road	89.2
1	Right	Take right turn at Naloyian Chowk	90.2



11.3	Right	At Hariana, Turn right towards Kamahi Devi Road (Caution: There's extremely bad patch for 800 mtr. after 0.5Km.)(DIRECT FOLLOW TILL DASUYA)	101.5
			

3.6	Slight Right	Continue onto Dholwaha - Janauri Rd 1	105.1
			

18.3	TS	BARUHI TIME STATION(After this sharp right turn)DC	123.4
			

7.5	KOM/QOM	KOTHI (SEGMENT ENDS) TURN LEFT TO DASUYA (After this Road is very sandy and with potholes,be	130.9
			

20	Right	At Dasuya, turn right towards Pathankot Road, DON'T TAKE FLYOVER	150.9



0.3	Right	Turn right onto NH44 (Jalandhar Pathankot Highway)	151.2
-----	-------	--	-------



55.2	TS	PATHANKOT TIME STATION	206.4
5.0	Left	At the roundabout, take the first exit towards Amritsar	211.4



37.3	Left	Turn left to stay on NH54 towards Amritsar	248.7
------	------	--	-------



3.4	TS	CITY FOOD, DHARIWAL	252.1
60.9	Left	Keep left at the fork and merge onto NH3/NH54 to Amritsar Bye Pass(DON'T TAKE FLYOVER)	313



5.6	Left	Turn left onto NH3 towards Jalandhar	318.6
-----	------	--------------------------------------	-------



6.6	Straight	Toll Plaza	325.2
2.1	TS	HAVELI AMRITSAR	327.3
30.8	Straight	Toll Plaza	358.1
36.6	Straight	Straight at PAP Chowk,Jalandhar (Take flyover)	394.7



1.1	Straight	Rama Mandi Chowk	395.8
6.0	TS	HAVELI JALANDHAR TIME STATION	401.8



39	Straight	Toll Plaza	440.8
7	Left	At Ludhiana Bye Pass keep left service lane (DO NOT TAKE FLYOVER)	447.8



0.8	Right	Turn Right (Going through underpass)	448.6
-----	-------	--------------------------------------	-------



0.1	Left	Turn left onto Miller Ganj Road	448.7
-----	------	---------------------------------	-------



1.1	Diversion	Road closed, take diverted path and reach back on he same route	449.8
-----	-----------	---	-------

2.2	Straight	Bad road for 100 mtr	452
-----	----------	----------------------	-----

4.3	Straight	Bad road for 100 mtr	456.3
-----	----------	----------------------	-------

0.1	Right	Turn Right at Sherpur Chowk towards Doraha	456.4
-----	-------	--	-------





0.1	TS	TIME STATION AT HOTEL RIYASAT	456.5
14.3	Straight	Check for Doraha Board at Top	470.8



1.3	Slight Left	Take left exit to Doraha(Opposite Peshari Chicken)	472.1
0.5	Straight	Canal Starts	472.6
0.1	Left	Take Left Turn along Canal	472.7

0.7	Straight	Bad Patch	473.4
0.4	Straight	Railway Crossing	473.8

1.2	Straight	Bad Patch	474.6
10.5	Straight	Goo straight at Maachhiwara	485.1
25.8	Straight	Go straight at Sh.Chamkaour Sahib ji	510.9

12.3	Straight	Go straight at Ropar bye pass	523.2
------	----------	-------------------------------	-------

1.3	Right	Go right	524.5
-----	-------	----------	-------



0.1	Left	Take left turn	524.6
-----	------	----------------	-------



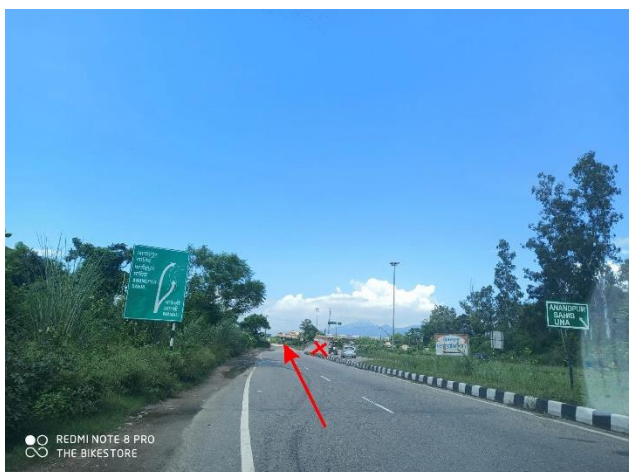
0.9	Go straight	Take flyover	525.5
-----	-------------	--------------	-------

16.6	TS	Bharatgarh	542.1
------	----	------------	-------

12.2	Straight	To Anandpur Sahib ji(Take flyover)	554.3
------	----------	-------------------------------------	-------



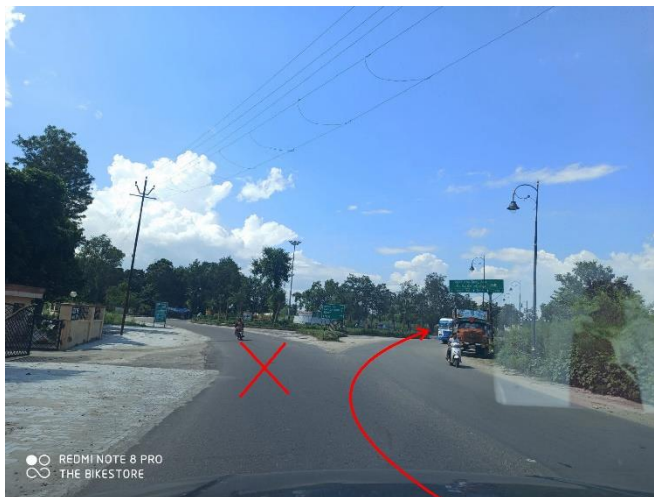
15.5	Straight	Go straight towards Nangal (underflyover) Don't take flyover in any case	583.8
------	----------	--	-------



0.2	Straight	Railway Crossing	584
0.5	Straight	Bridge (Bad Road)	584.5
0.4	Straight	Go straight at NFL Chowk	584.9
0.8	Straight	Straight at Guru Ravidas Chwok	585.7



0.5	Right	Turn Right at PACL Chowk towards Una	586.2
-----	-------	--------------------------------------	-------



0.2	Straight	Railway Crossing	586.4
0.5	Left	Take left turn towards Una	586.9



0.6	Right	Turn Right towards Una	587.5
-----	-------	------------------------	-------



2.1	Straight	Go straight at Mehatpur TOLL BARRIER	589.6
-----	----------	--------------------------------------	-------

11.9	FINISH	The Bikestore Una	601.5
------	--------	-------------------	-------

Important Note: Cue sheet printouts would be provided by us to all the participants on the day of briefing.

The Cue sheet would be the final criteria for distance of race as the online applications show some errors in actual distance.